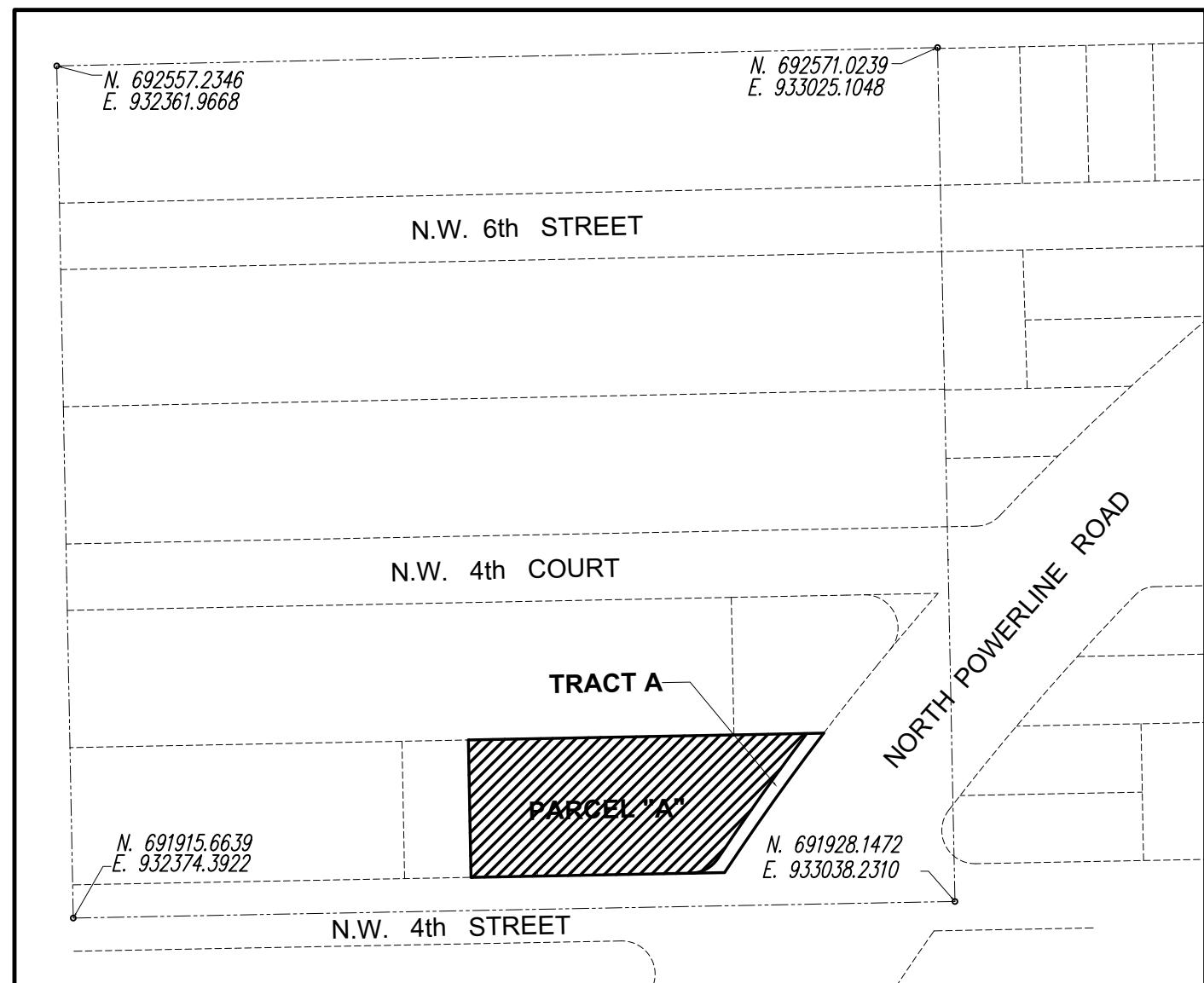


"IMECA "

A Subdivision of a portion of Southeast 1/4, of Section 33, Township 48 South, Range 42 East, lying and being in City of Pompano Beach, Broward County, Florida.

Prepared By:
Bello & Bello Land Surveying Corporation
12230 S.W. 131 Avenue, Suite 201, Miami, Florida 33186
www.bellolandsurveying.com
February, 2023

PLAT BOOK _____ PAGE _____
(SHEET 2 OF 2)



Location Map
Not to Scale

